

# User Guide for Emergency Ready App



# Contents

1. Emergency Ready App
2. How to Install
3. How to Use
  - Start the Application
  - Main Menu of the Application
  - Information on Emergency Facilities
  - Information on Embassies
  - Safety Guide

# 1. Emergency Ready App



- The application automatically selects its language among English, Chinese (Simplified), and Chinese (Traditional) depending on the language of the mobile phone

## 2. How to Install (Android)

① Tap "Play Store"    ② Tap "Search" icon    ③ Enter "Emergency Ready"    ④ Tap "Emergency Ready"

① Play 스토어 실행



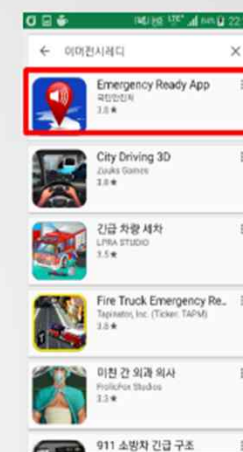
② 우측상단의 검색 아이콘을 선택



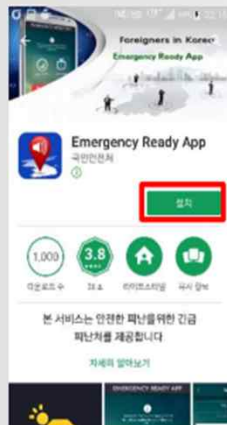
③ 검색창에 '이머전시레디' 입력



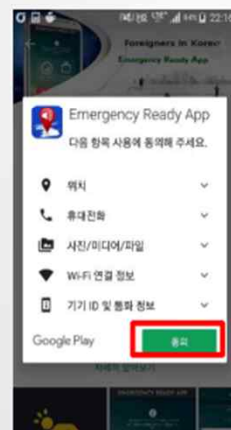
④ 검색결과에서 '이머전시레디' 선택



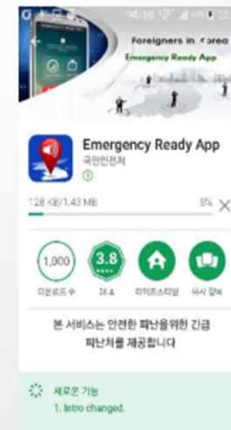
⑤ '설치' 버튼 선택



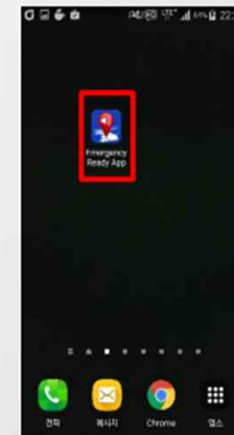
⑥ '동의' 선택 → 앱 설치



⑦ 앱 설치 중 화면



⑧ 바탕화면 '안전디딤돌' 실행



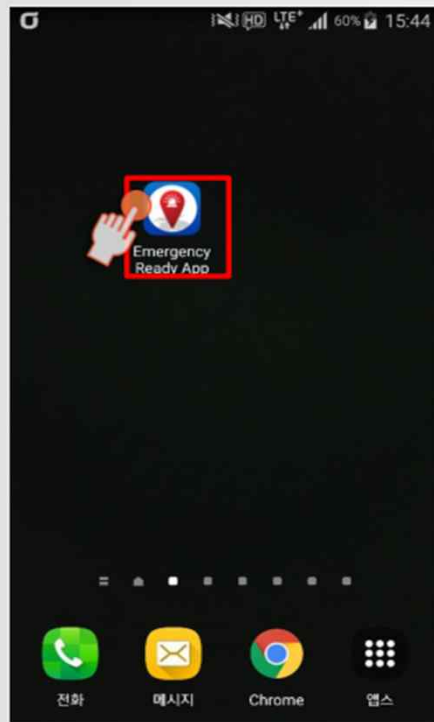
⑤ Tap "Install"

⑥ Tap "Accept"

⑦ During installation

⑧ Tap "Emergency Ready"

### 3. How to Use — Start the Application



1. Tap the application

-영문 이머전시레디



-중문(간체)이머전시레디

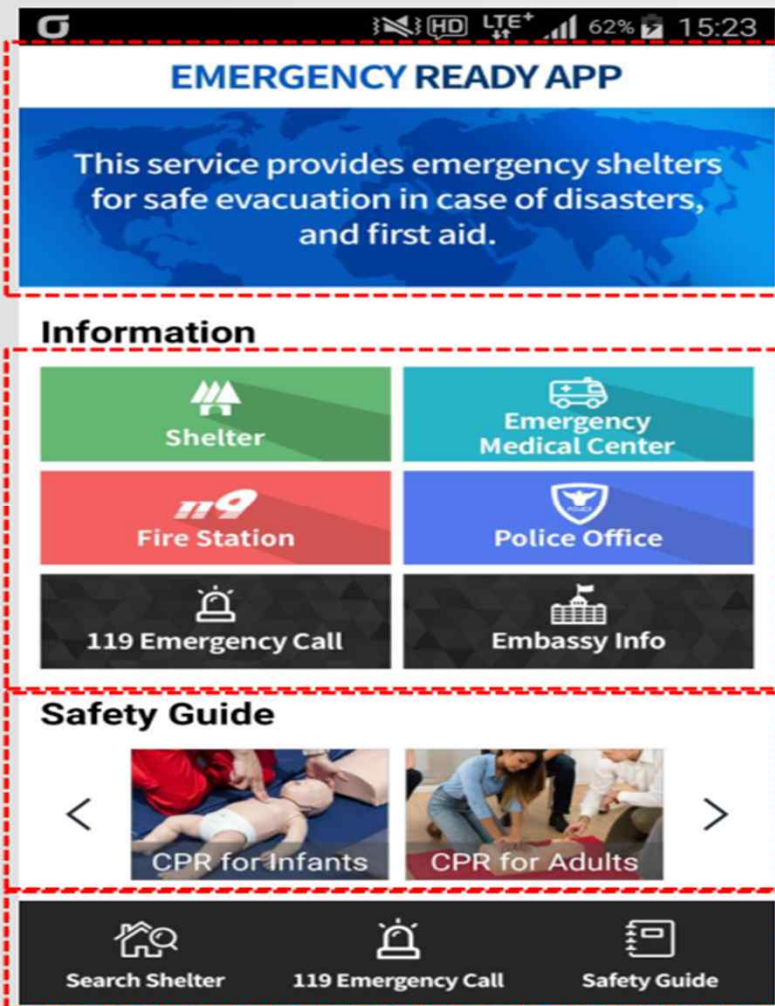


-중문(번체)이머전시레디



2. Splash screen in English, Chinese (Simplified), and Chinese (Traditional)

### 3. How to Use – Main Menu



Application title and introduction

Main information

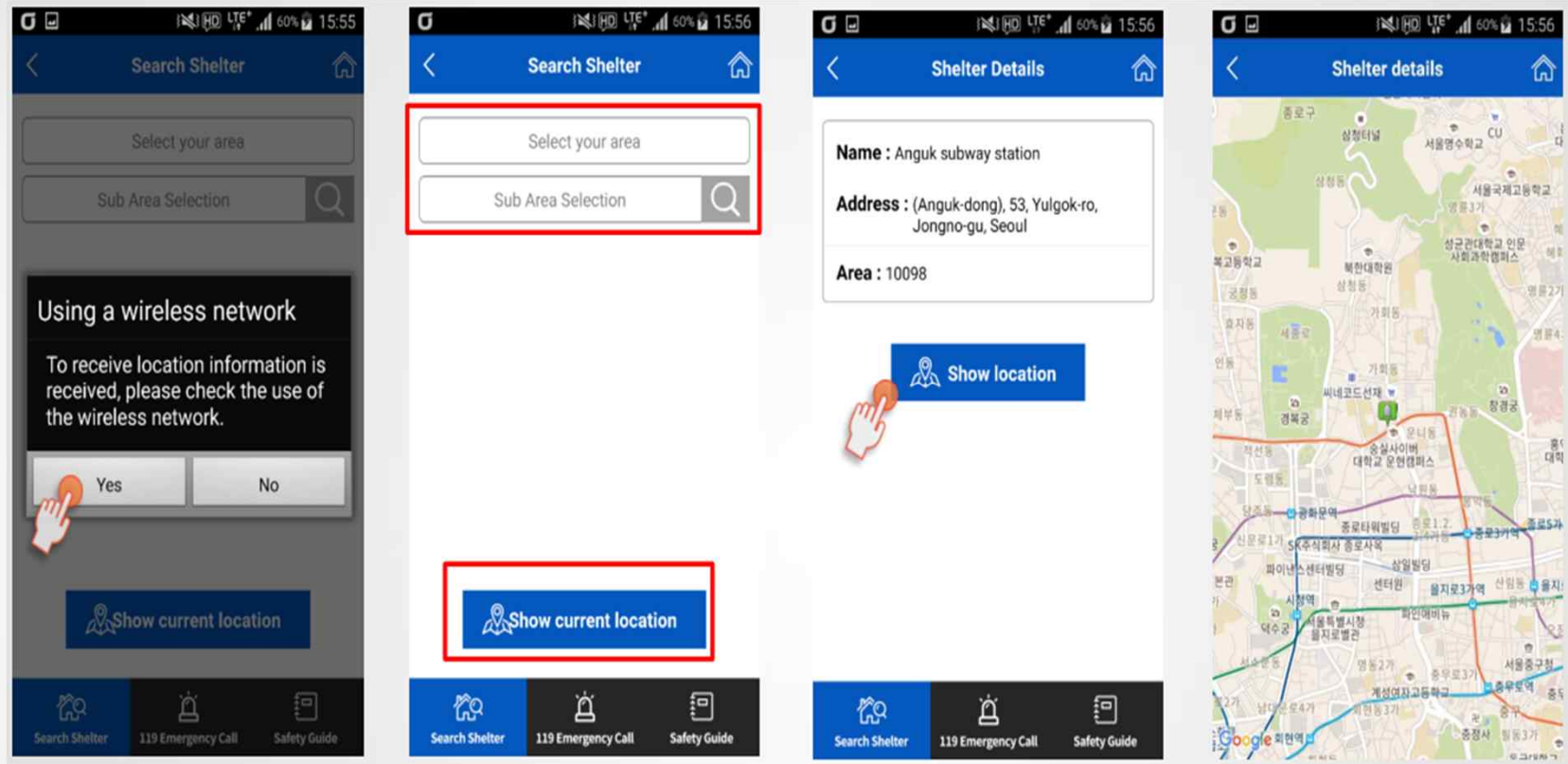
- Shelters, emergency medical centers, fire stations, police offices, 119 emergency call, and embassies

Safety guide in emergencies

Bottom navigation bar



### 3. How to Use — Emergency Facilities



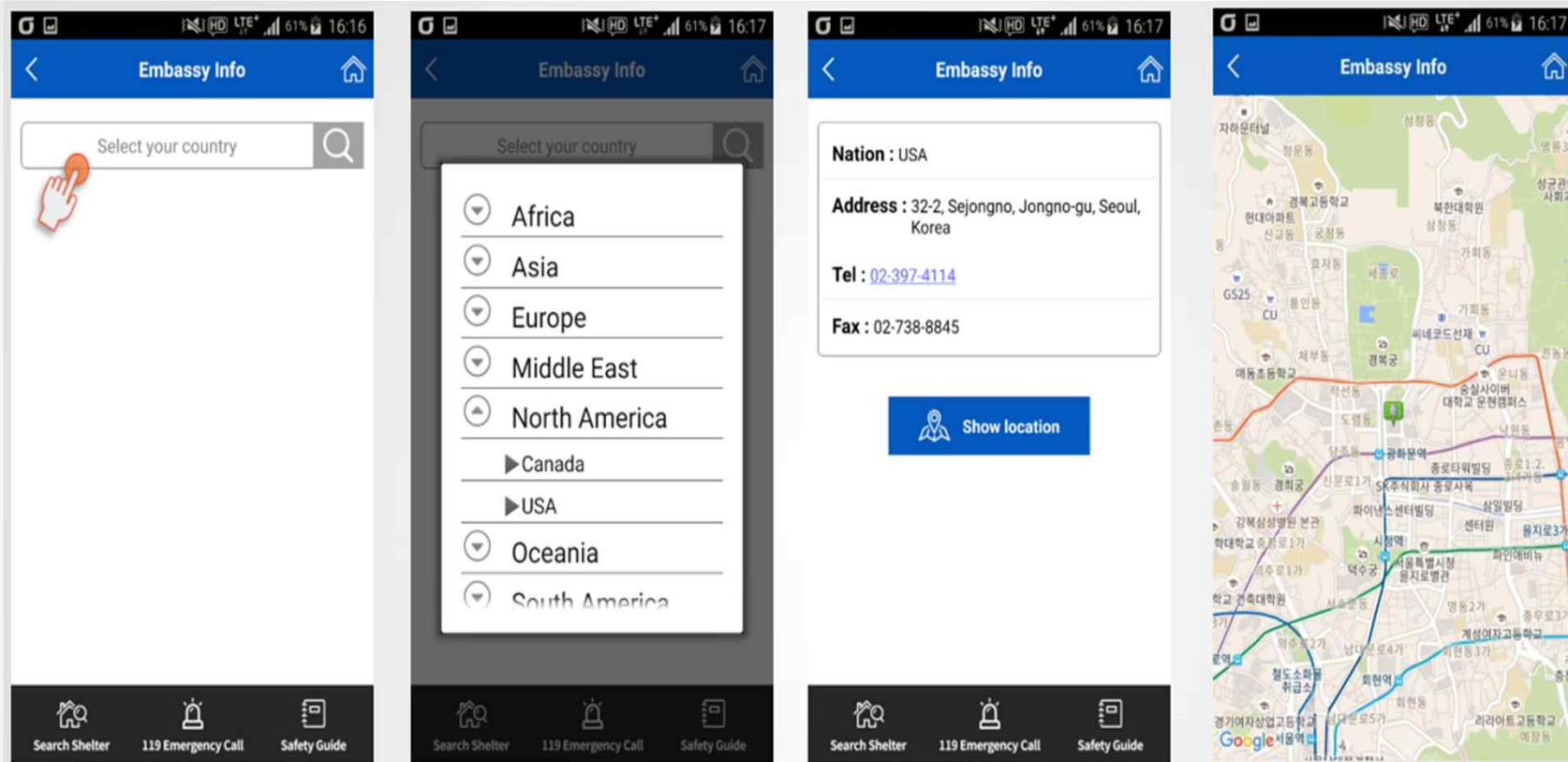
1. The message pops up if the GPS is off
2. Tap “Yes”

3. Select the area
4. Tap “Show current location” to see the current location on the map

5. Check the detailed information and tap “Show location” to see the location on the map

6. The location is displayed on the map

### 3. How to Use — Embassies



1. Tap “Select your country”

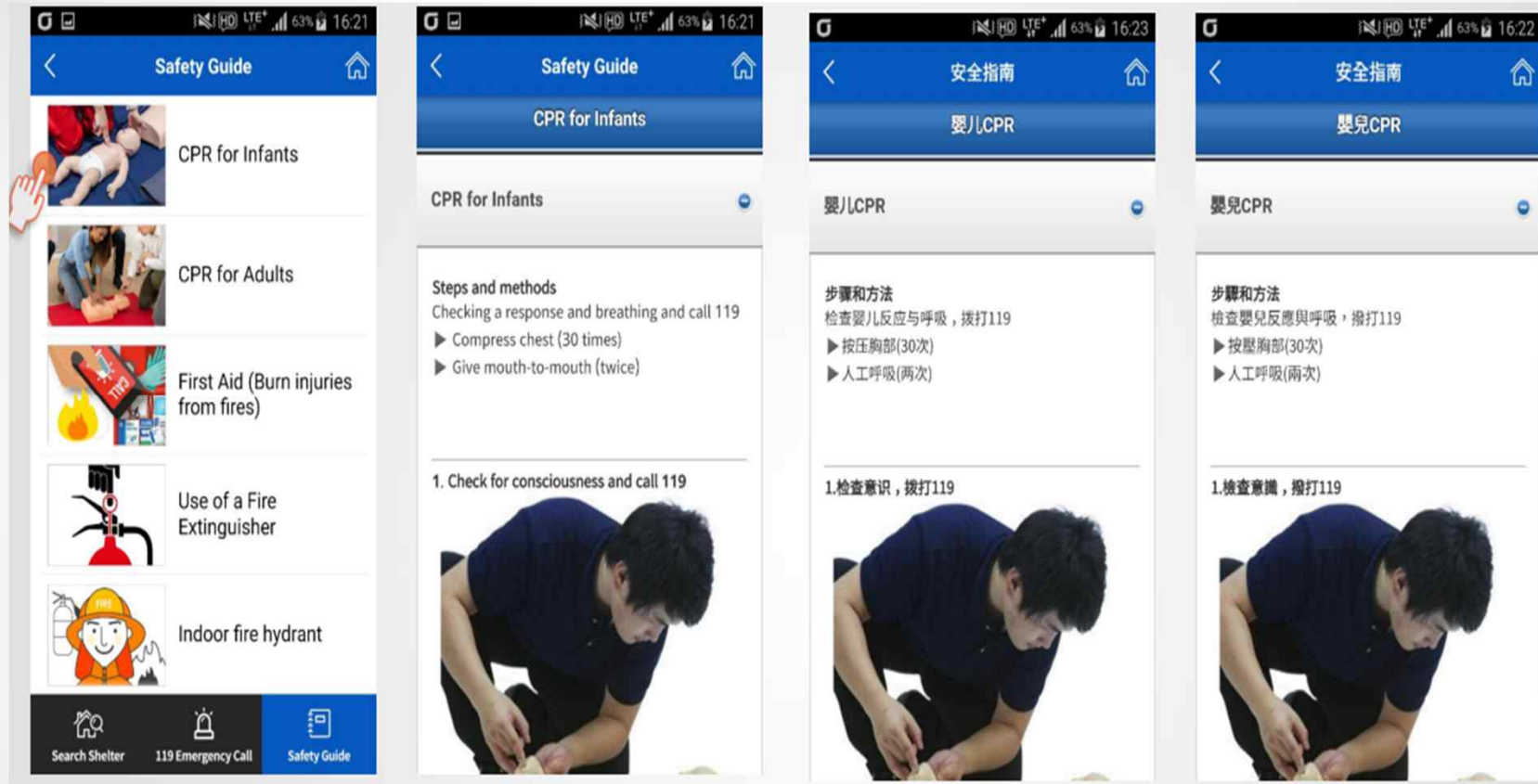
2. Tap the country of the embassy you look for

3. Check the detailed information

4. Tap “Show location” to see the map



# 3. How to Use — Safety Guide



1. List of the safety guide

2. English version is available depending on the language of the phone

3. Chinese (Simplified) version is available depending on the language of the phone

4. Chinese (Traditional) version is available depending on the language of the phone